

# Living better

issue:

10

The Art of Home

Design Focused

Inside

Clever concepts to maximise  
your hallway's potential

Find yourself in a  
Mediterranean wellness retreat  
that invites you to unwind and  
indulge, making you want to  
stay forever

A  
*Bold*  
New Vision

From the runway to your living  
space: 2025 style must-haves

THE TRANSFORMATIVE ISSUE  
**Metamorphosis**



Published March 2025 ©

For Healthy Living Home Connections

WWW.LNRINTERIORS.CO.UK

“Design is a journey of discovery.”

David Carson

Celebrating Issue 10

# WE DID IT!

After reaching 5,974 downloads, we are excited to present Issue 10 of our Better Living Guide, now rebranded as “Living Better: Art of Home Guide.” As I write this from the back of a taxi, I am filled with an overwhelming sense of gratitude and joy. The support and love we have received over the years has been truly incredible. A heartfelt thank you to all our readers, in-house tribe and downloaders!

Explore the Essence Within: Our mission remains steadfast: to provide you with a meticulously crafted publication that showcases the best in interior design, fashion, and travel, all enriched with a touch of wellness. Here’s a preview of what you can expect in this issue:

Interior Inspiration: In this edition, you’ll discover colour inspiration, a focus on sustainable interiors, art to adorn your walls, expert tips, current trends, and creative ideas. Whether you are renovating, refurbishing, or simply seeking inspiration, we are completely prepared to assist.

Fashion Insights: From the runway to our homes, explore key runway designs and the elements that have seamlessly transitioned into major interior home design trends to watch in the upcoming seasons.

Travel: Feeling a bit tense and in need of a getaway? Discover an exclusive wellness retreat that is listed as one of the world’s top destination spas by the Condé Nast Traveller Readers’ Choice Awards U.S. 2024.

Our Creative Approach: We embrace the mantra “work smarter, not harder.” Our team combines creativity with practicality to ensure that each publication we create is a masterpiece. Quality publications are our goal, and we are excited about the future ahead.



Lianne Rock  
Editor, Creative Director & Founder

*Editors Notes*

# Contents

- 8 Tint Temptation
- 13 Culture Club  
Gallery 4
- 15 Green Living Swiss Alps
- 19 Chic & Unique:  
Accent Tables
- 24 In-House
- 27 Design Focus:  
The Bridge
- 33 Style Forecast  
What's Next?
- 36 Culture Club  
Gallery 3
- 37 Discovery: House Tour  
Wing House II
- 44 Runway Homes



# Contents

- Travel: Rediscover & Reconnect. Dreamscapes 54
- Visual Vibrations 62
- Style Sleuth 65



# TINT TEMPTATION

Experience the allure of Benjamin Moore's sultry red, a deep and saturated hue that adds an earthy, dusky charm to any room. With subtle orange hints, this colour makes a bold statement. Enhance it with rustic elements like woven baskets, wooden furniture, and lush green plants for a calming and welcoming environment.

LNRINTERIORS.CO.UK MARCH 2025

Country Red LRV: 8.03

WELLNESS INTERIORS / ARCHITECTURE / PREMIUM / DÉCOR / ART / TRAVEL







# QUOTES

//////

"When we ponder the grand odyssey of our existence, we may discover a multitude of trials we have bravely overcome. It is within these very moments that our resilience is crafted, empowering us to face the challenges that await. Press on with unwavering spirit and nurture your belief in the potential within."

Lianne Rock @Inrinteriors



## SAMIRA EL BALI



### CULTURE CLUB: GALLERY 4

Samira El Bali encapsulates the enigma of the unseen, yet profoundly tangible. Vivid expressions of pure intuition. Gold shimmers with allure and elegance, each stroke exuding tranquility and strength. Uncover her irresistible creations @Inrinteriors.co.uk

# BOLD NEW VISION

Welcome to a New Era  
Living Better - The Art of Home



© Published January 2025

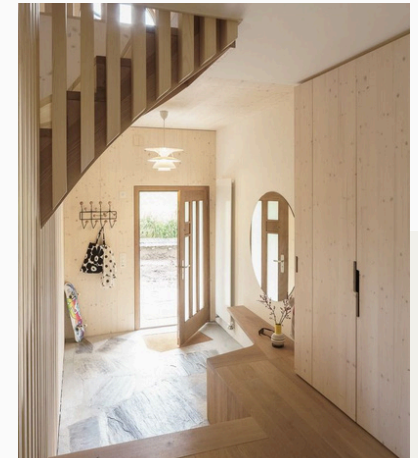


## GREEN LIVING

*Swiss Alps*

**W**ith sustainability as a central focus, the House with an Eye in Zurich, Switzerland, features a significant reduction in carbon footprint.

Designed by Architects Studio Anna Jach, the project was completed in a short construction time using local materials. The building features insulation with a thickness of 26cm, contributing to a total wall thickness of 40cm. This design choice has successfully reduced heating costs by 50%.



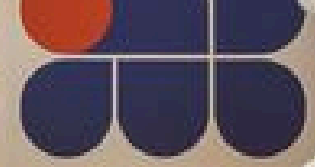
**I**nside, wooden panels were left without additional rendering, serving as the final finishing surface. This approach allows for natural humidity exchange, creating a pleasant room climate and the fresh scent of pine wood. No artificial chemical treatments were used for internal wall protection; instead, the surfaces were protected with natural flax oil combined with 5% white mineral paint to prevent yellowing over time. Beyond the building's sustainability features, the library room is a perfect retreat for book lovers. The circular window creates a serene reading nook, letting you stay visually connected to the outside world, almost as if you're keeping watch through the building's eye.





20.1 - 25.7.21  
KUNSTHAUS  
ZÜRICH

BERNARD  
**RICHTER**  
LANDSCAPES



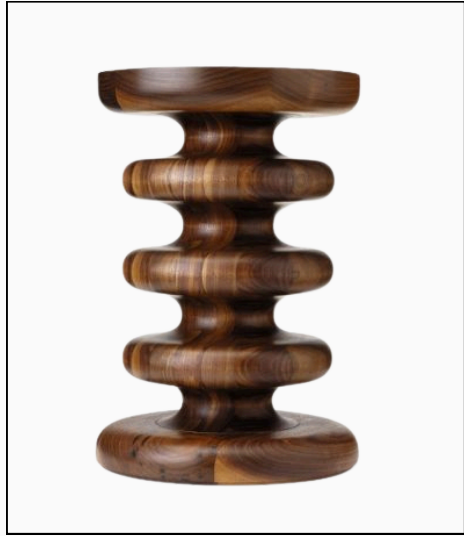
“One thing about those tables, they always turn.”



# TABLES



SCULPTURED ACCENTS



**THE VERTERE**  
Stuart Scott



**PROFITEROLE**  
Bohinc Studio



**LOGGIA**  
Curio



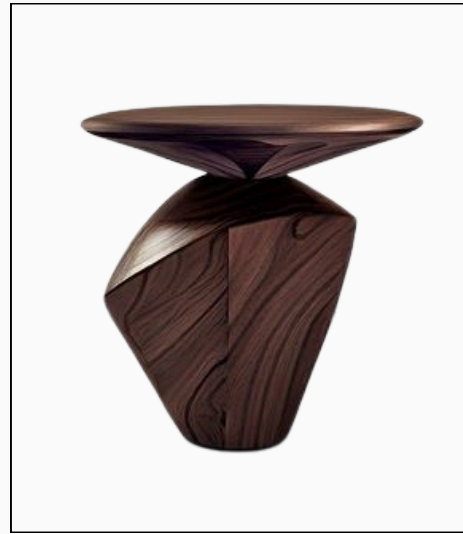
**DECKER**  
Shropshire Design



**INSERT SIDE**  
Asher + Rye



**KELLY HOPPEN ONYX**  
Andrew Martin



**SOLACE SERIES 5**  
Joel Escalona



**DEXTER**  
Sweetpea & Willow



**CURIO**  
Loggia



**BRUTALIST**  
1stDibs



*your vision*

OUR CANVASS



# LNR INTERIORS



BOUTIQUE INSPIRED  
1-BED RESIDENCE

LNR INTERIORS  
LDN PROJECT





# Bridg

---

# g

---

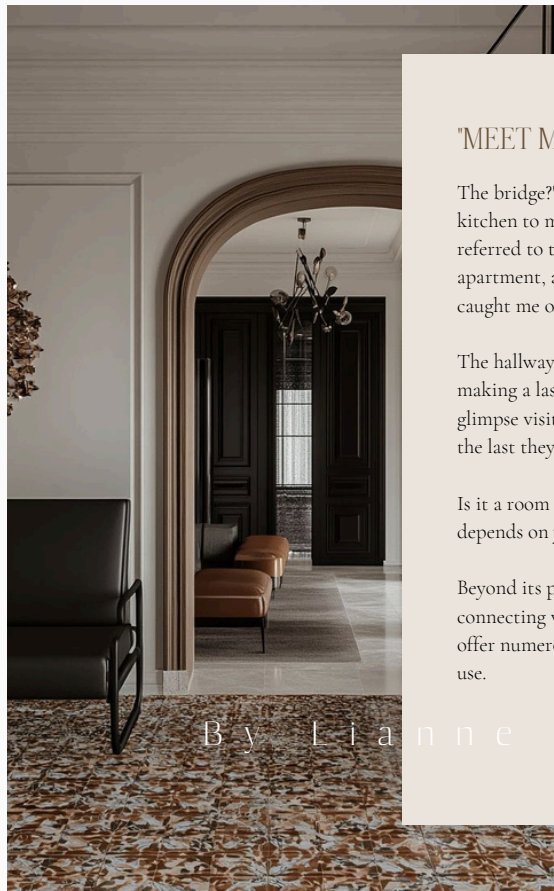
# e

## Fueling Innovation in Creative Businesses

Better Business Guide



@LNRINTERIORS.CO.UK  
PHOTOGRAPHY BY JEFF TURNAL



## "MEET ME ON THE BRIDGE"

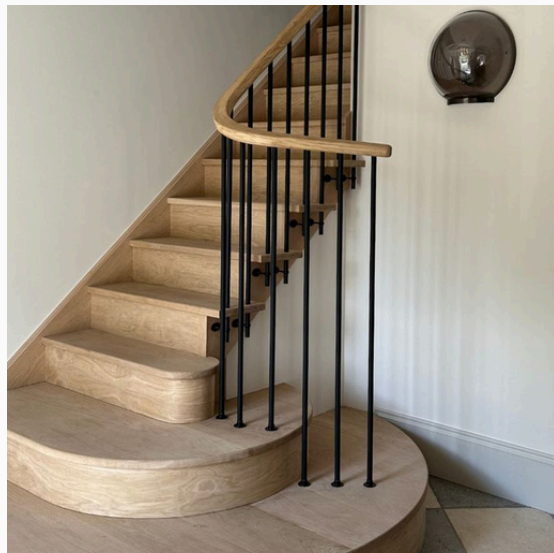
The bridge?" I called back from the kitchen to my daughter. This term referred to the passage in our suburban apartment, a unique description that caught me off guard.

The hallway is an ideal starting point for making a lasting impression. It's the first glimpse visitors get upon entering and the last they see as they leave.

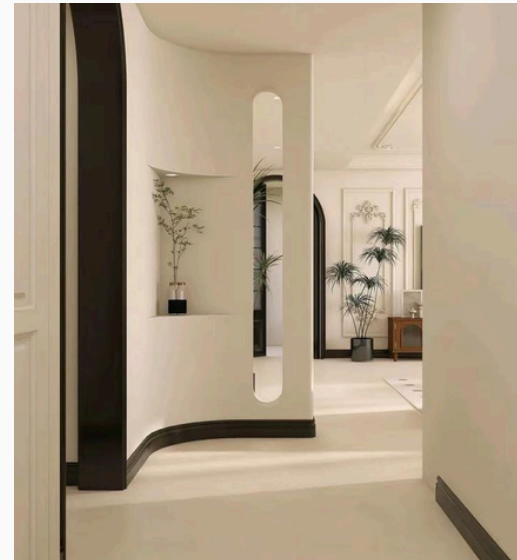
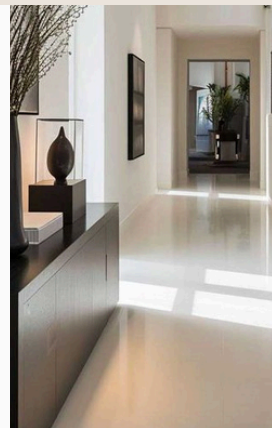
Is it a room or a thoroughfare? That depends on your perspective.

Beyond its primary function of connecting various rooms, 'the bridge' can offer numerous unique possibilities for use.

By Lianne Rock



Mathew Cox: The Loupe Light

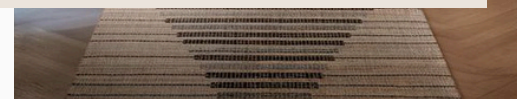


Via Pinterest



## DESIGN TIP

"Go bold with oversized mirrors to enhance depth and sophistication. They reflect natural light, creating a bright, inviting haven. To infuse personality, select a striking frame to match your decor and consider various shapes like round, oval, or asymmetrical to create a delightful surprise.



Lemieux Et Cie

## IMPRESSIVE IMPRESSIONS

In the past, the hallway was often overlooked compared to other areas within a residential domain. However, over time, we've seen a significant shift, with this multifunctional space rising to the top of many people's priority lists.

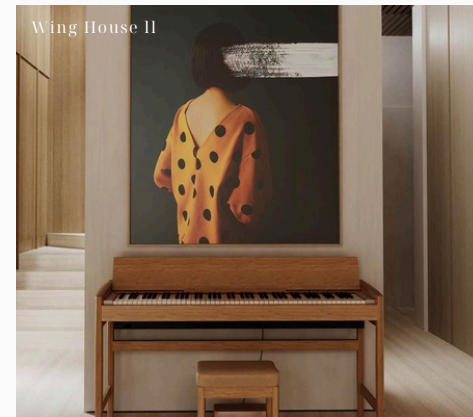
To help you unlock your hallway's potential here are 5 unique ways to maximise your living space.

### #1 AN IMPROMPTU WAITING AREA

A small experiment in my home revealed the powerful influence of seating. Adding a bench, repurposed occasional chairs, ottomans, and poufs redefines your hallway into a welcoming space for arrivals and departures. Visitors linger, squeezing in the last moments of chatter while slipping on shoes and coats. It's also an ideal waiting spot for children, offering comfort while you complete your final checks before stepping out for the day.

### #2 MUSIC HALL AND PRACTICE DISTRICT

Not sure where to place that small piano tucked away in a spare room? Showcasing musical instruments or setting up a listening station in your foyer adds a quirky touch. Displaying your musical talents and interests creates engaging as well as soothing moments for all to enjoy.



Wing House II



Ferm Living



Architectural Digest



### #3 CENTRAL POST HUB

The hallway is the perfect spot for reminders, notes, and important dates. A practical cork wall or a chic upholstered bulletin board can serve as cost-effective pinboard surfaces. Incorporate key hangers, sleek stationery sets, and letter holders to keep everything organized and within reach.

### #4 MINI ART GALLERY

Intrigue your visitors and spark instant conversation by showcasing your favourite paintings and photographs. The art you choose will not only evoke emotion but also ground the essence of your personality within the space.

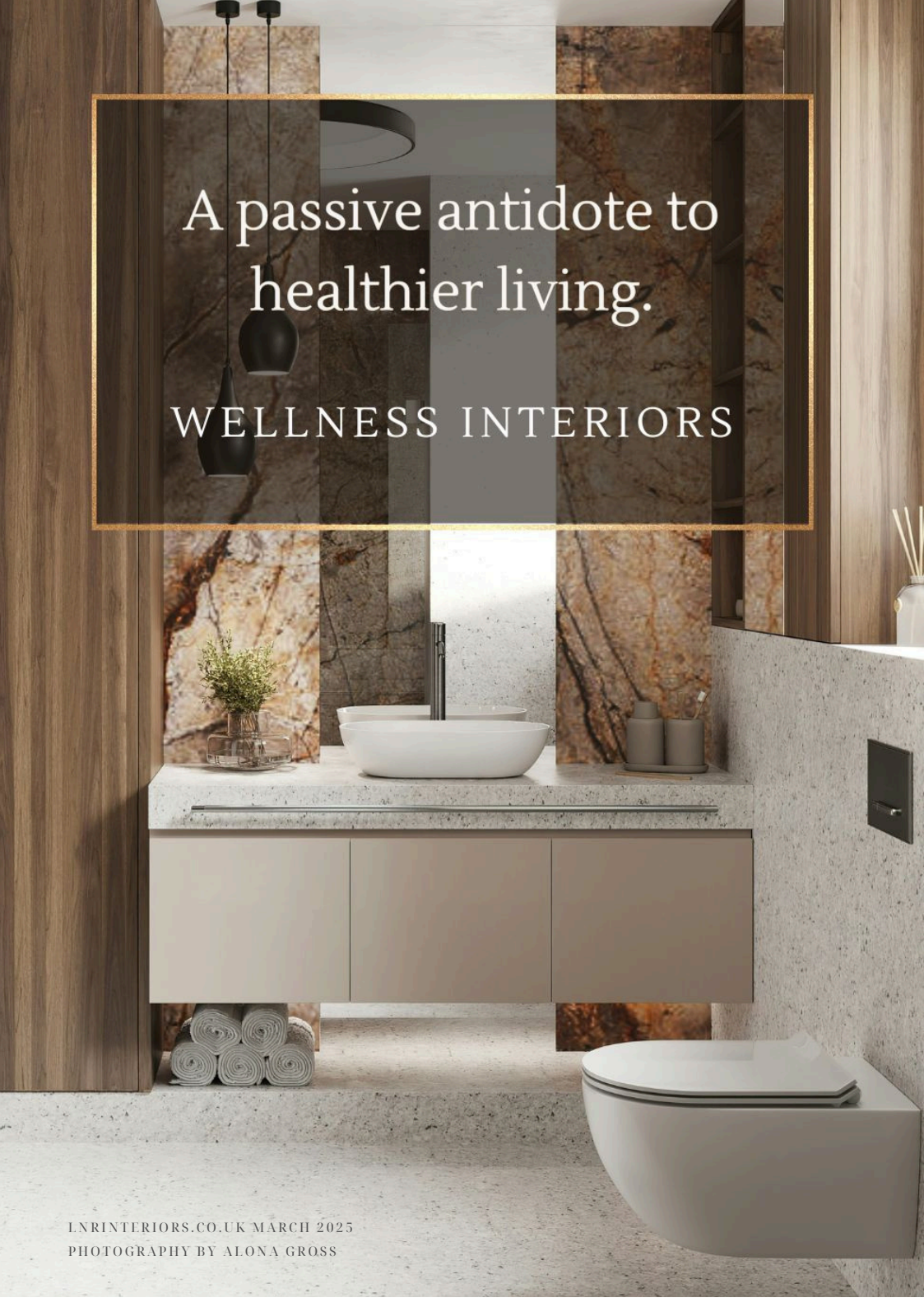
### #5 KIDS FUN STATION

When my daughter was a toddler, this space was invaluable. Incorporate low storage, and a fun pod, children's table and chairs featuring built in storage. This set-up creates a delightful arts and crafts activity zone, keeping your little ones busy and entertained while allowing you to keep a watchful eye on them from any room in the house.

### REVOLVE & ENVOLVE

For homes with limited space, making the most out of your hallway can greatly enhance the overall functionality of your living environment. Our hallways, often relegated to the status of mere passageways, hold untapped potential waiting to be reimaged. 'Revolve and Evolve' captures the essence of this transformation—a call to see your space as ever-changing, adapting to new moods, functionalities, and inspirations. Reimagine your hallway turning every arrival and departure into a moment of inspiration.





A passive antidote to  
healthier living.

WELLNESS INTERIORS

# STYLE FORECAST

WHAT'S NEXT?  
OUR PREDICTIONS

Choosing meaningful treasures and items that resonate with you will always serve you well as they become the focal points that tell your signature story. We enjoy merging modern contemporary elements with vintage and retro chic to create distinct worldly spaces that are an extension of your spirit, lifestyle and pleasures.

Looking ahead in 2025, we expect to see a rise in textural storytelling. Textural and architectural layers will be enhanced by integrating tactile surface formations, structured materials and hues that speak to the senses. Whether fruity, fizzy pastels or relaxed earthy tones, we anticipate more colour-infused schemes as beige Japandi concepts take a back seat this year. As maximalism returns, bold lines, strong patterns and motifs surge, creating spaces that present unexpected yet harmonious elements, depth, and fetching character.

Healing spaces have become an essential aspect of design. Fluid lines and flexible layouts will dominate, showcasing personal and sensual styles. Embrace individuality in aesthetics as we bid farewell to uniformity. Antiques and eclectic pieces will shine alongside metals and glass in various shades and finishes, emphasising key design features within our homes.

LNRINTERIORS.CO.UK MARCH 2025

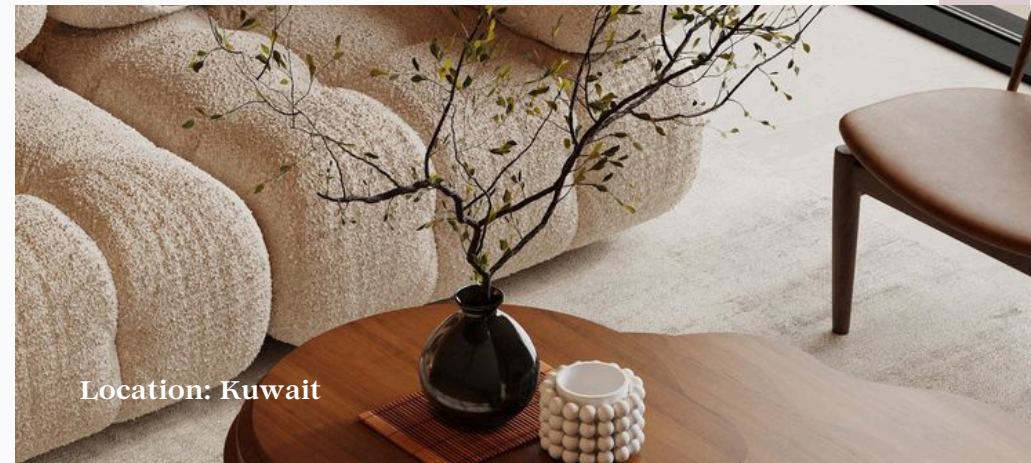


# TAYRN WELLS



## CULTURE CLUB: GALLERY\_3

Discover the mesmerising world of Taryn Wells, a fine arts artist who blends surrealism with fauvism. Her delicate silk compositions, with their corrugated folds and furrows, will captivate your senses and provoke your imagination. Explore her collection and bring a piece of her enchanting art into your life @lnrinteriors.co.uk



Location: Kuwait

## THE WING HOUSE II

A BEHANCE DISCOVERY

Designer: Mirna A.Emad

Highlights Gathered

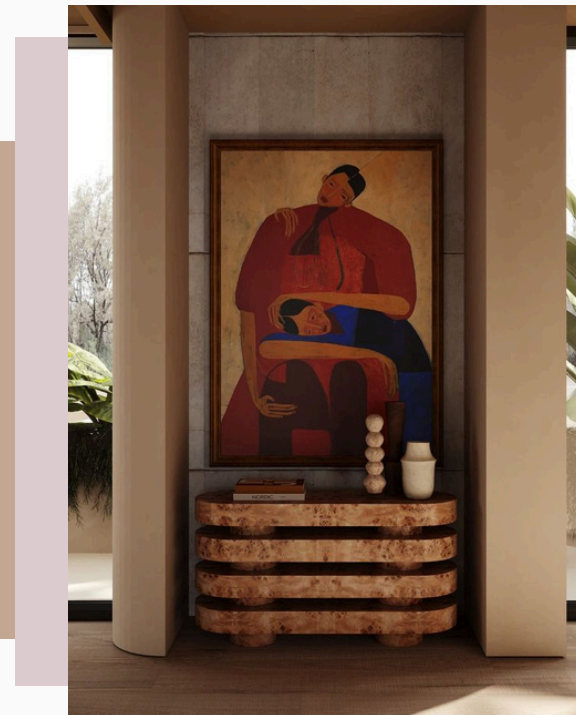
Year: 2023

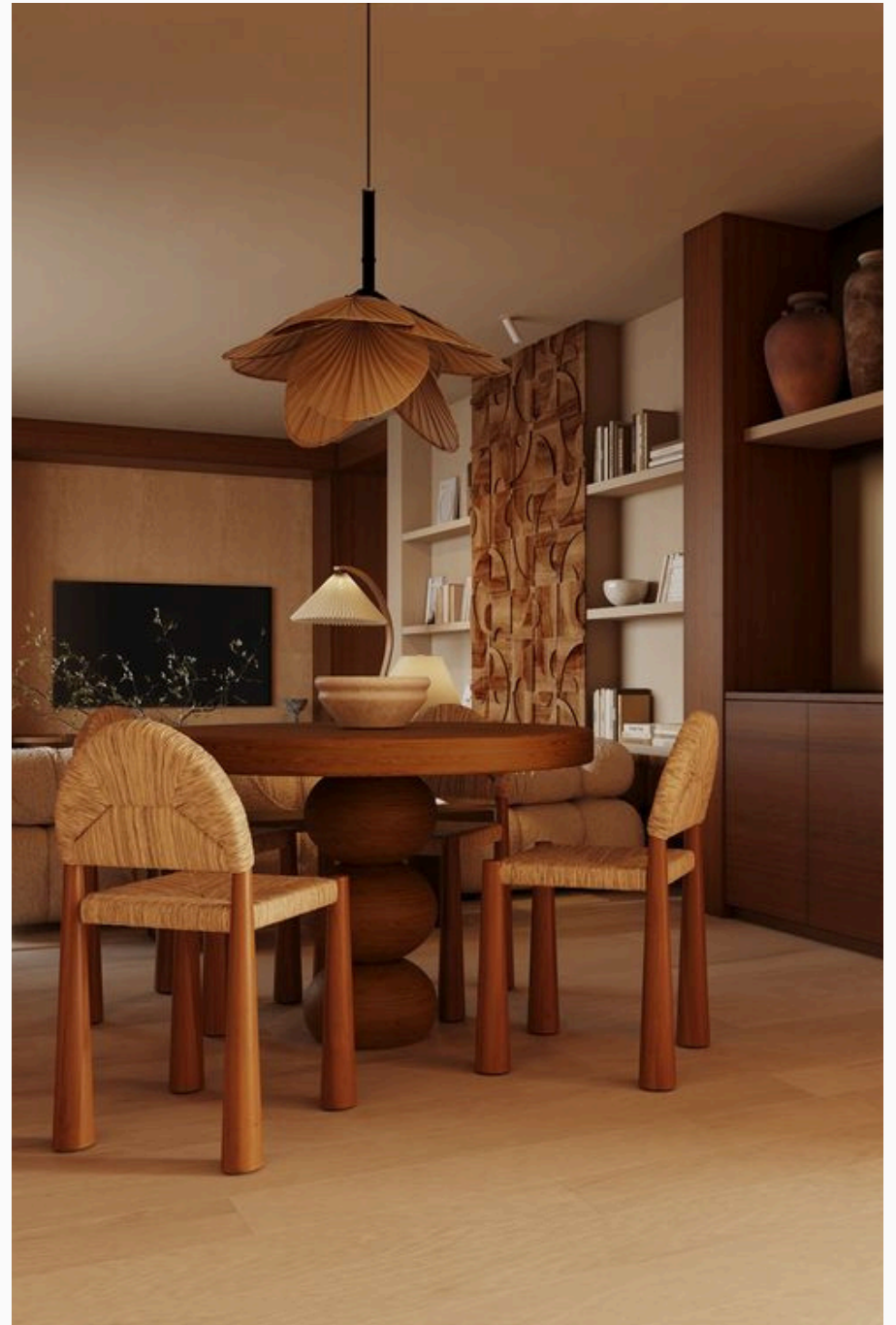
3Ds max 2022 | Corona renderer 8 | Photoshop CC

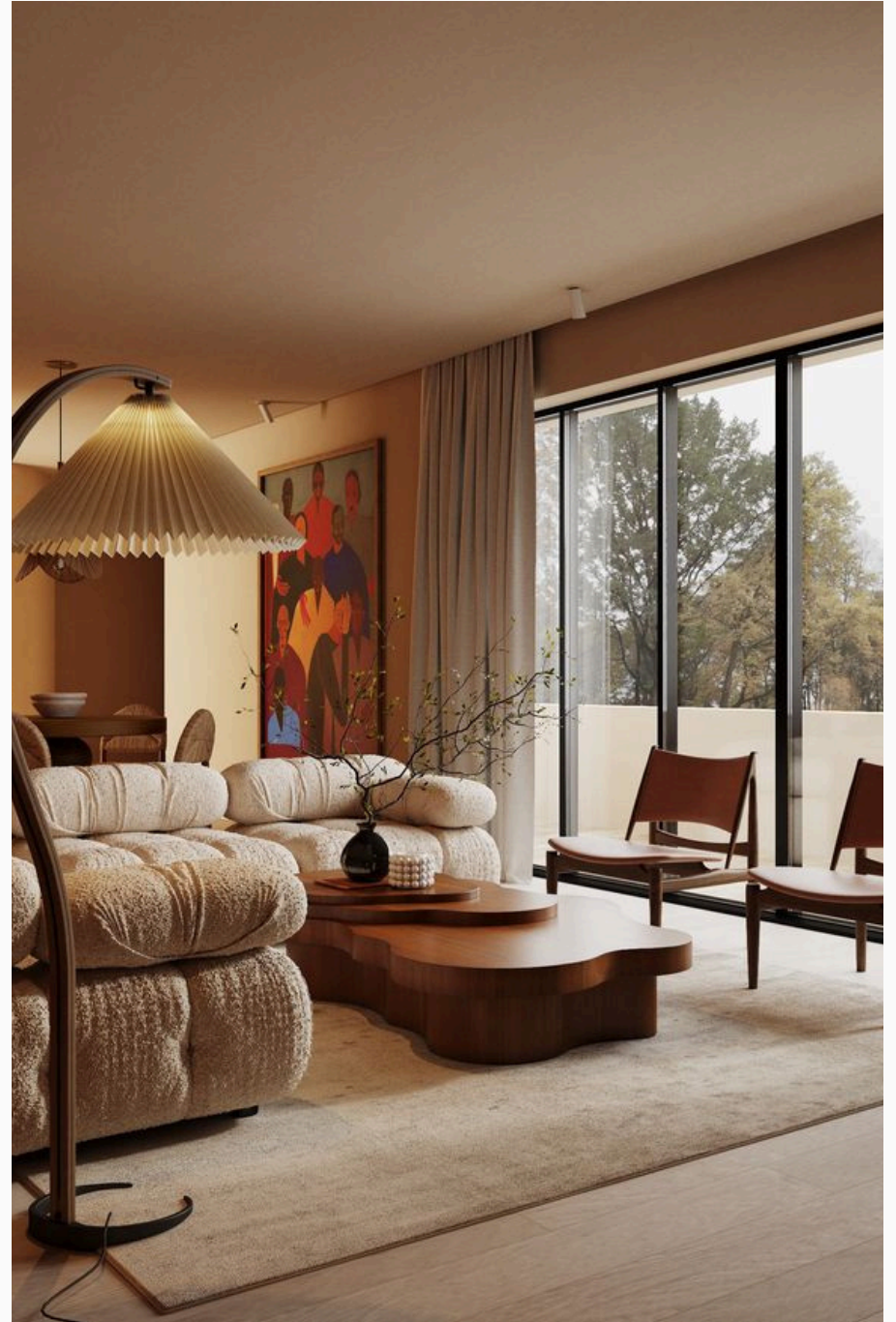
A multi-storey family dwelling located in Kuwait, with 420 m2 built-up area and app. 500 m2 open landscape featuring diverse recreational spaces and magnificent scenes.

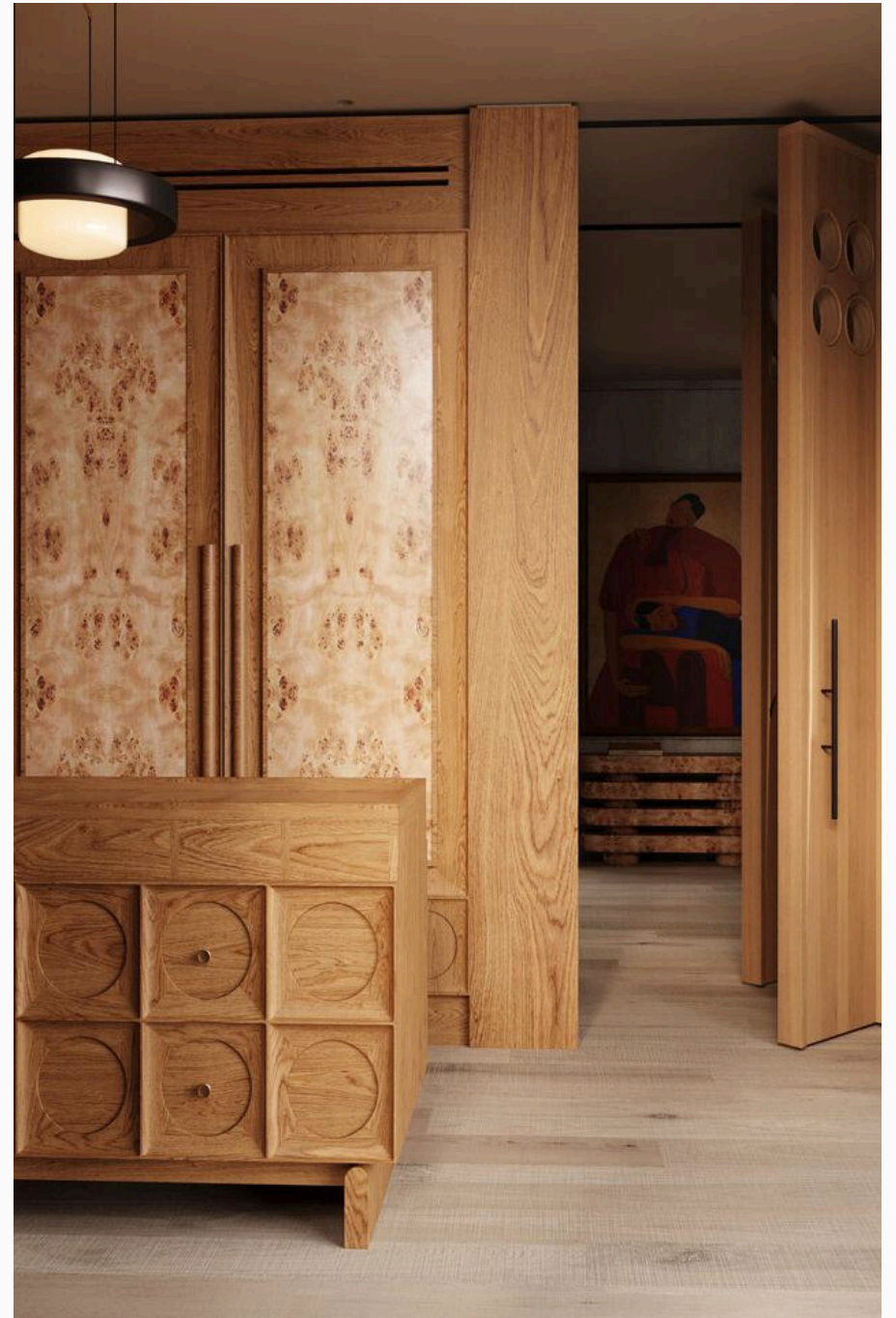
The client requested an eclectic mix of Mediterranean and art deco styles that would be delivering the luxury vibes while avoiding shiny surfaces, gigantic sculptures or excessive use of fancy materials.

Noted for its mellow retreat vibes reinforced with an unwavering understated opulence, this charming design delivers a subtle mix of flattering textures that gently entices you to slowdown and loosen up.









# COUTURE DECOR MUST HAVES

BY LIANNE ROCK

Fashion and interior design have long shared a close relationship, often influencing each other in terms of structure, silhouettes, colour palettes, and fabric choices.

We've searched far and wide to present distinguished pieces to adorn your home, hallmarked by today's runway trends.



*Image Top Left: Hairy Dining Table by Mark Malecki. Constructed of powder coated steel. 20,000+ individual pieces (hairs) welded to a steel base frame.*



*Image Right: Dedicated to Rebirth, Bottega Veneta's Autumn/Winter 2024 collection showcased fringed textures on the runway of Milan*



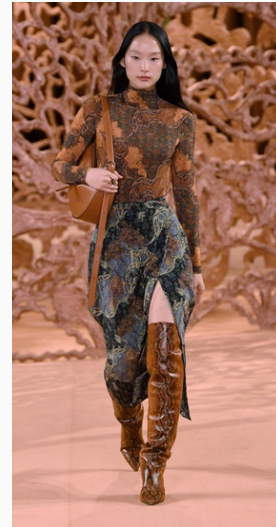
runway  
homes

BOTTEGA  
VENETTA



# HAIRY TABLE

*Fringe* *Texture*



## ESPRESSO

*Season's Must-Haves On & Off the Runway*

**Brown:** An understated, humbling hue that bestows rich sophistication and a depth like no other. Associated with nature, brown is a comforting and reliable shade that made its way onto almost every runway in a multitude of shades.

In architecture and interior design, this composite colour can be applied in countless schemes to achieve contrasting environments. Paired with complementary organic tones such as blues, greens, and grays, the earthy qualities of this complex pigment are magnified.

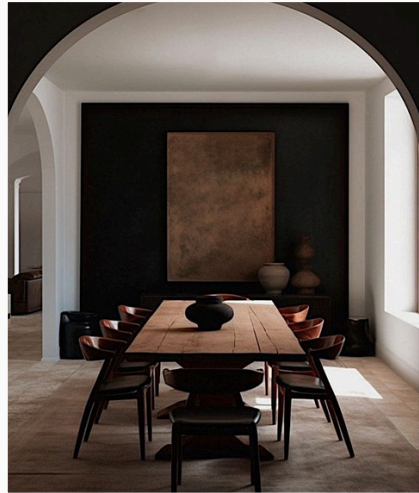
Intentionally layering brown on brown in a monochromatic design scheme is a coveted style trend. When executed well, it can deepen the atmospheric nuances within a space.

Darker shades exude a timeless luxury. When combined with bronze, spicy oranges, and burgundies, they can intensify elegance and further enrich a space. Adding neutral tones balances the heavier feel of darker browns. Strategic planning is necessary before applying any colour or furnishings to a room. Before cultivating your perfect home story, consider the shape and size of the space to ensure the right atmosphere will translate effectively.





Arteriors



Lemieux Et Cie



Lemieux Et Cie



Lemieux Et Cie



# FRILL SEEKERS

Frills, often seen as decorative additions, have a significant impact on the overall aesthetic and feel of a space. These delicate and often elaborate design elements can bring a touch of whimsy, elegance, and femininity to interiors, making rooms feel inviting and cozy.

## Historical Roots and Modern Appeal

Frills have a rich history in interior design, dating back to times when opulence and ornamentation were prized. From the ruffled draperies of Victorian parlors to the intricate lace trims of French country cottages, frills have always been associated with luxury and attention to detail. Today, they continue to charm us, seamlessly blending the old with the new, both in our homes and on the runway.

Whether it's through the delicate trim on a cushion or the elegant edge of a drape, frills add an element of softness and movement to a space, transforming the atmosphere introducing a fresh wave of ambient energy.

## Incorporating Frills into Contemporary Spaces

Modern interiors often favour clean lines and minimalism, but frills can be strategically used to soften these spaces and infuse the space with character.



## STYLE INSIGHT

In contemporary design, frills are being reimagined in fresh and innovative ways. Designers are experimenting with materials and scales, incorporating oversized ruffles in unexpected places like modern lampshades or minimalist furniture. This juxtaposition of styles creates a unique look that is both timeless and cutting-edge.

Moreover, frills are not just confined to fabric. They can be found in architectural details such as scalloped moldings or the undulating curves of a wrought iron gate. These elements add layers of texture and interest, inviting the eye to explore every corner of a room.

For those who appreciate the finer details, frills offer a versatile way to express personality and flair. Whether you lean towards the lavish or the subtle, incorporating frills into your decor can transform an ordinary space into something truly sensational.

Consider these ideas for incorporating frills into your home:

1. Textiles: Look for ruffled pillows, fringed throws, or lace-trimmed curtains to add texture and interest.
2. Furniture: Choose pieces with frilled edges or scalloped details to introduce subtle elegance.
3. Accessories: Opt for decorative items like frilly lampshades, ornate mirrors, or intricate tablecloths to create focal points.

## Balancing Frills with Modern Design

The key to using frills effectively is balance. Too many frills can overwhelm a space, making it feel cluttered. Instead, aim to use them as accents that complement the overall design scheme. Pair frills with simple, understated pieces to create a harmonious and inviting atmosphere.

Frills bring a sense of charm and romance to interior design, offering a unique way to personalise your space. Whether through textiles, furniture, or accessories, these decorative elements can enhance the beauty and comfort of any room, proving that sometimes, a little bit of frill can go a long way.



**GILBERT**

*Quinn Jays*





A WELLBEING ISLAND IN THE MALDIVES

# JOALI

Rediscover and reconnect at Joali Maldives, the first premium getaway of its kind.

Nestled on Bodufushi Island in the Raa Atoll region of the Maldives, this luxurious resort provides a variety of artistic wellbeing experiences, ensuring a rejuvenating holiday that restores balance to mind and body.

Exclusively accessible by seaplane, Joali offers a boutique experience where each guest embarks on a thoughtfully curated journey to this tranquil paradise. With its vibrant marine life, azure waters, and pristine white-sand beaches, the island delivers an unforgettable escape.

This breathtaking destination incorporates biophilic design principles—design, inspired by nature, to enhance wellbeing. The resort features 68 exquisitely designed beach and

ocean villas, each with its own private pool for your enjoyment and a dedicated butler, also known as a 'Jadugar.'

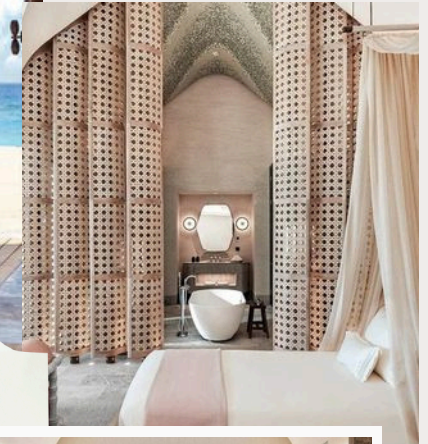
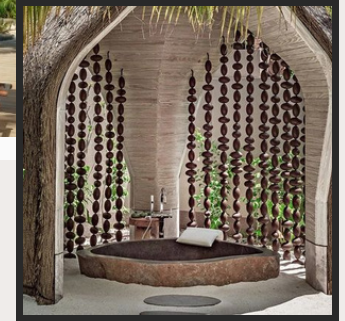
Guests can choose from two-bedroom wellness beach pool residences to sunset grand ocean pool villas, perfectly suited for a family of four. Imagine the scent of the ocean breeze, the soothing sounds of waves gently lapping the shore, and the sight of the sun setting over the horizon—Joali Maldives offers all this and more.



Travel / Living Better The Art of Home



*Aesthetic*



RECHARGE,  
RELAX AND  
RECONNECT





## WELLBEING & FITNESS

The serene environment, combined with state-of-the-art facilities, invites guests to embark on a transformative journey of self-discovery and rejuvenation. Joali's wellness and fitness centre encapsulates the 'Joy of Weightlessness' philosophy, offering a unique approach to holistic health through each of its pillars:

**Mind:** Cultivate inner peace and clarity with expert-guided meditation sessions and mindfulness workshops.

**Skin:** Luxurious treatments using natural ingredients are tailored to nourish and revitalise, leaving the skin glowing and refreshed.

**Microbiome:** Specialised programmes focus on gut health, recognising its vital connection to overall wellbeing, with nutritionists on hand to personalise dietary plans

**Energy:** Innovative fitness classes and energy-boosting therapies are designed to invigorate and empower, helping guests rediscover their vitality.

Joali is not just a retreat; it's a holistic haven where every aspect is thoughtfully designed to promote a balanced and harmonious lifestyle.

With accolades such as the prestigious 2025 Forbes Travel Guide Award and recognition as the fifth-best destination spa in the world by the 2024 Condé Nast Traveller Readers' Choice Awards (United States), Joali Maldives, along with the Joali Being experience, stands out as a truly unique wellbeing oasis.

“Discover the art of living well—explore, reconnect, and deepen the connections that matter most.”

Discover the art of living well—explore, reconnect, and deepen the connections that matter most. Consistently praised by visitors for its impeccable cleanliness and first-rate service without pretentiousness, Joali is a haven of serenity and sophistication. Here, guests can truly unwind and savour the finer things in life.

Positioned amidst lush landscapes and pristine beaches, its architecture harmonises with the surroundings, and interiors seamlessly blend natural beauty with modern comforts, creating an atmosphere that is both indulgent and welcoming.

Feel the gentle caress of the ocean breeze as you unwind on your private terrace, where the horizon stretches endlessly before you. The resort offers a sanctuary where tranquility and luxury coexist, inviting you to fully immerse yourself in the experience. Whether basking in the warmth of the sun by the infinity pool or savoring a gourmet meal crafted from the freshest local ingredients, every moment is designed to evoke a sense of peace and rejuvenation.

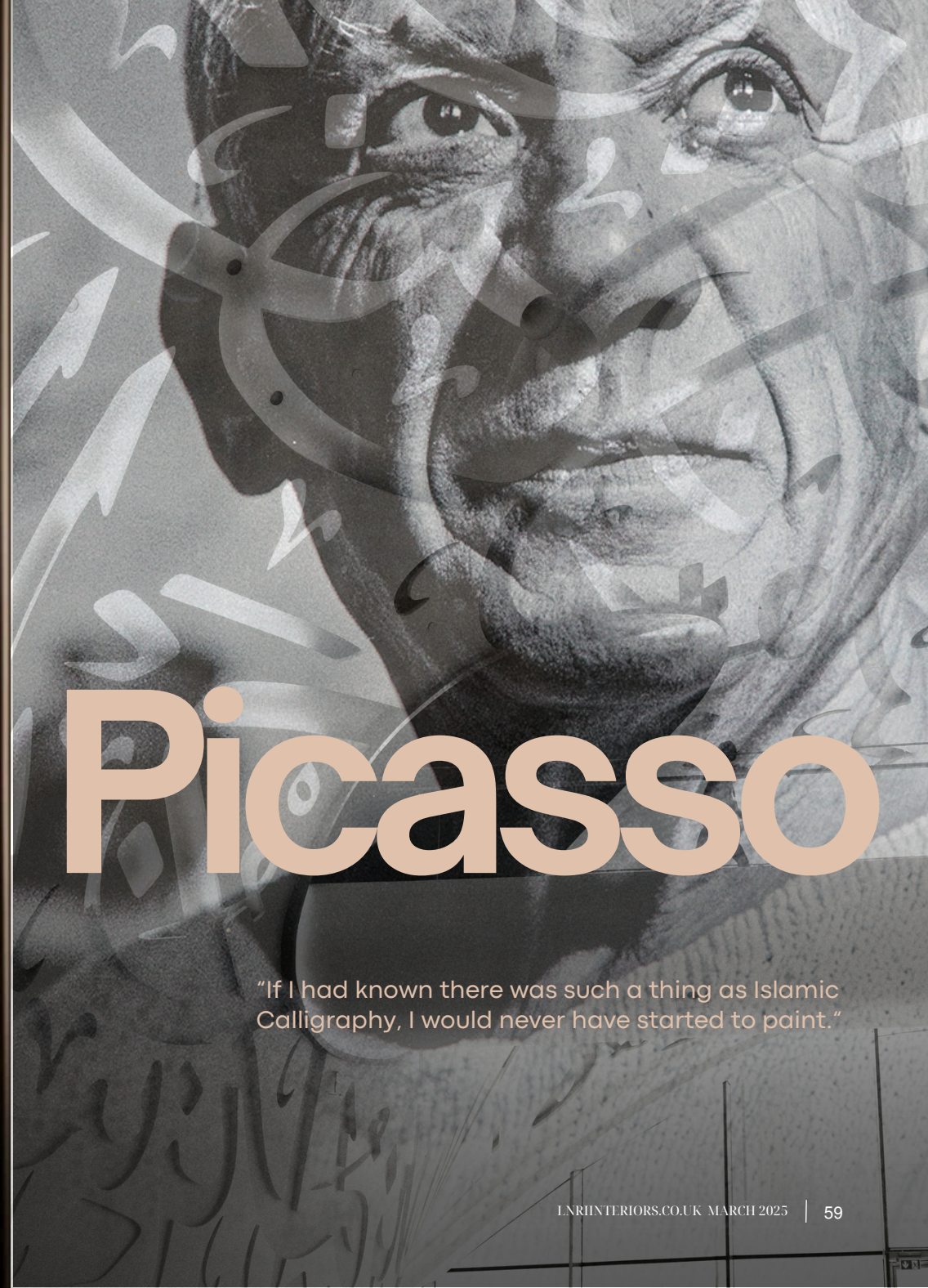
The resort offers a sanctuary where tranquillity and luxury coexist, inviting you to fully immerse yourself in the experience. Whether basking in the warmth of the sun by the infinity pool or appreciating a gourmet meal crafted from the freshest local ingredients, every moment is designed to evoke a sense of peace and rejuvenation.

Plan your escape today by visiting Joali's website and embark on a transformative journey to unparalleled luxury and wellbeing. Your serene paradise awaits.

[Joali Maldives Wellbeing Escapes](#)



Photo credits  
Joali Maldives



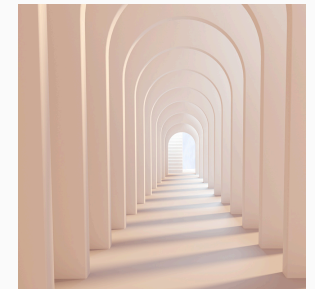
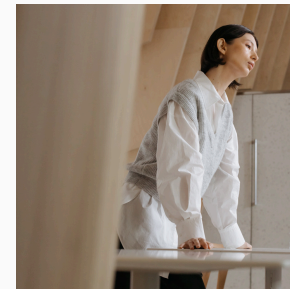
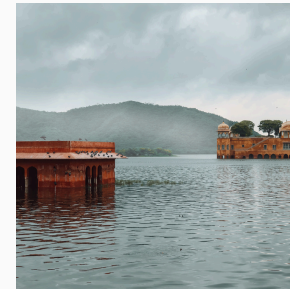
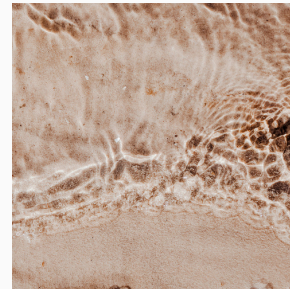
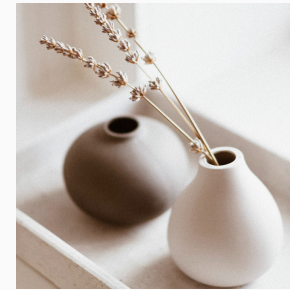
# Picasso

"If I had known there was such a thing as Islamic Calligraphy, I would never have started to paint."



# Mood

INTERIORS.O.L.K. MARCH 2025







# Style Sleuth

Top Artisan [Etsy Finds](#)

## MARBLE LUST

LEVANTO ROSSO MARBLE PEDESTAL TRAY,  
HANDMADE RED MARBLE SERVING DISH,  
ELEGANT STONE CENTERPIECE,  
DECORATIVE TRAY

[PiccolaCraftsCo](#)



## SOLID SCULPTURE

HANDCRAFTED ABSTRACT MINIMAL  
DESIGN WOOD SCULPTURE -  
MODERN SUSTAINABLE WOODEN  
DECORATIVE ART PIECE

[LoopArtandDesign](#)



## SMART CLASSIC

VINTAGE COFFEE SET OF 2 BY VEV ITALY  
MODEL DEPOSITATO - MOCHA POT  
AND SUGAR BOWL, GOLDEN DETAILS,  
DESIGN ITALY

[BuzziGang.](#)



## BOHEMIAN STAR

WALNUT PENDANT LIGHT FOR KITCHEN  
ISLAND, ELEGANT MODERN CHANDELIER  
LIGHTING FOR SCANDINAVIAN DECOR

[Wood U Light](#)





o n t h e m o v e

# 10



Let's connect  
We always want to hear from our readers and in-house tribe. We welcome your thoughts and suggestions. If you would like to submit your work, promote your product, discuss how we can assist with your next project or have an enquiry about any products featured in this issue get in touch.

[info@lnrinteriors.co.uk](mailto:info@lnrinteriors.co.uk)



PHOTOGRAPHY BY LEE JEFFS